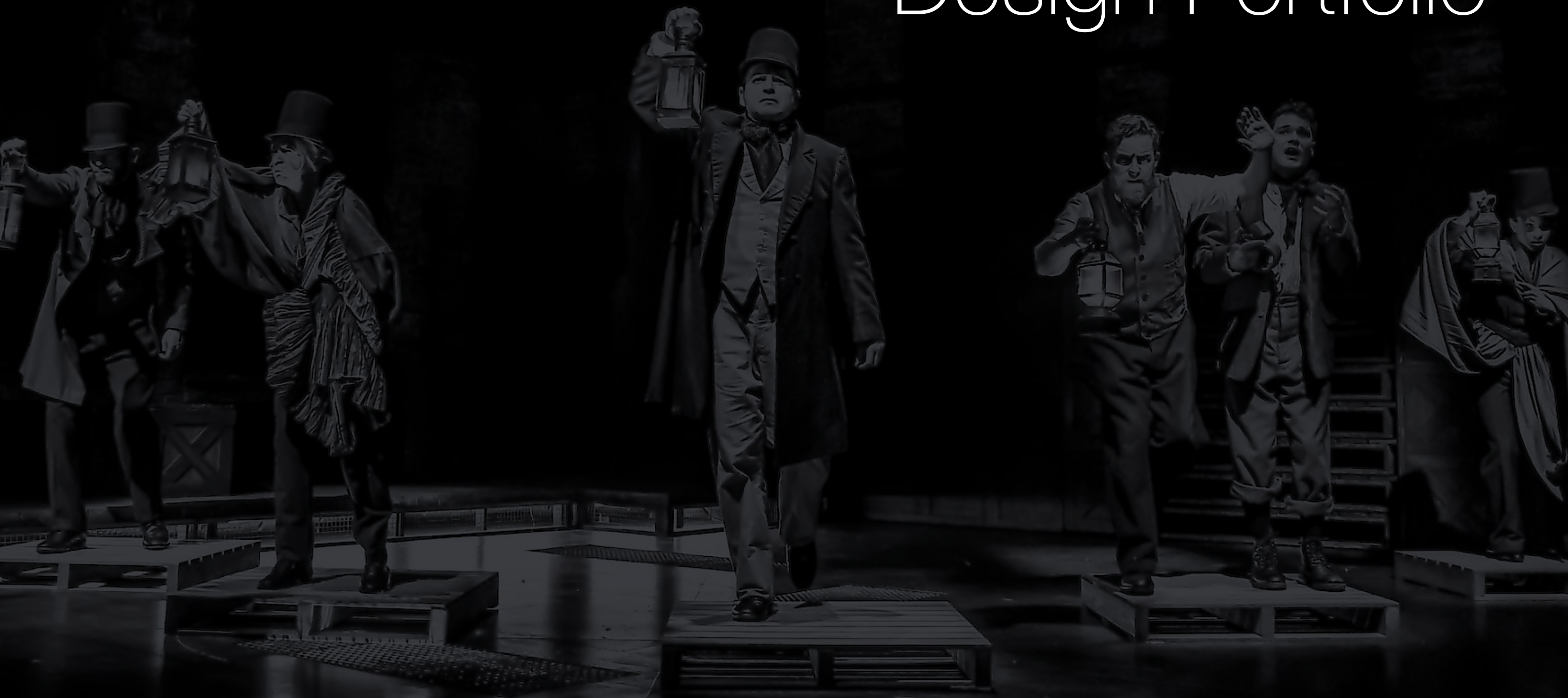


# Matt Ladkin

## Design Portfolio





# About

Matt is a Lighting Designer, Associate & Programmer based in Suffolk, UK and has over 20 years experience in the entertainment industry.

He has worked in a wide variety of performance genres including theatre, musical theatre, dance, cabaret, circus, live music, immersive experiences, exhibitions and corporate events in multiple continents.

Matt is known for dynamic, energetic and colourful designs and has a great musicality that he brings to all his work. Matt has a great technical knowledge alongside a keen eye for detail and texture in his design work.





# Theatre & Live Performance

(selected credits)

## as a Lighting Designer

DANCE // OFFLINE 2 | Indigo at the O2, London | 2026  
We Will Rock You | Belgrade Theatre, Coventry | 2026  
DANCE // OFFLINE | Indigo at the O2, London | 2025  
Barnum | Belgrade Theatre, Coventry | 2025  
Italia Conti | The Luhrmann Effect | Woking | 2025  
Italia Conti | In the Room | Woking | 2025  
Sonhos, Lama e Rock & Roll | Rio De Janeiro, Brazil | 2024  
The Paddington Bear Experience | London | 2024  
Italia Conti Summer Showcase | Woking | 2024 - 2025  
Grease | Belgrade Theatre Coventry | 2024  
The Town O' Musical | Sao Paulo, Brazil | 2023  
Peaky Blinders, The Rise | Riyadh, KSA | 2023  
Great Expectations | Mercury Theatre, Colchester | 2023  
Kinky Boots | Belgrade Theatre, Coventry | 2023  
D&B Dance Academy Showcase | London | 2021  
Zara Larsson: Spotify Live | London | 2020  
Griff: Live at Tate Tanks | Tate London | 2020  
Starlight Express | Albany Theatre, Coventry | 2019  
Spirit of the Horse | UK Tour | 2018  
La Clique | Brighton Arts Festival | 2018  
The Ladyboys of Bangkok | UK Tour | 2015 - 2016, 2018 & 2025  
Cirque Surreal | The Lowry, Salford | 2015

## as an Associate Lighting Designer

The Saw Experience | GamePath | 2022 - 2023  
Peaky Blinders, The Rise | Immersive London | 2022 - 2023  
Italia Conti Summer Showcase | Woking | 2022 - 2023  
Dr Who: Time Fracture | Immersive London | 2021 - 2022  
Secret Cinema: Stranger Things | Los Angeles, USA | 2020  
Secret Cinema: Casino Royale | Shanghai, China | 2019  
Calendar Girls the Musical | UK Tour | 2018 - 2019  
Justin's Party | UK Tour | 2018  
The Merchant of Venice | Globe Theatre | 2016  
Molly Wobbly's Tit Factory | Hackney Empire | 2015  
Spaghetti Western Orchestra | European Tour | 2012

## as a Lighting Programmer

The Saw Experience | GamePath | 2022-2023  
Peaky Blinders, The Rise | Immersive London | 2022-23  
Dr Who: Time Fracture | Immersive London | 2021-22  
The Upstart Crow | Gielgud Theatre | 2020  
Secret Cinema: Casino Royale | Shanghai, China | 2019  
Calendar Girls the Musical | UK Tour | 2018-19  
Mr Swallow: Houdini | Soho Theatre | 2017  
The Merchant of Venice | World Tour | 2016  
York Mystery Plays | York Minster | 2016  
Three Little Pigs | UK Tour | 2015  
The Gruffalo | UK Tour | 2015-18  
Sizwe Bansi is Dead | UK Tour | 2014  
Moon Tiger | UK Tour | 2012  
Puckoon | UK & Ireland Tour | 2012



# Great Expectations

The Mercury Theatre

Colchester, UK | 2023

Lighting Design by Matt Ladkin



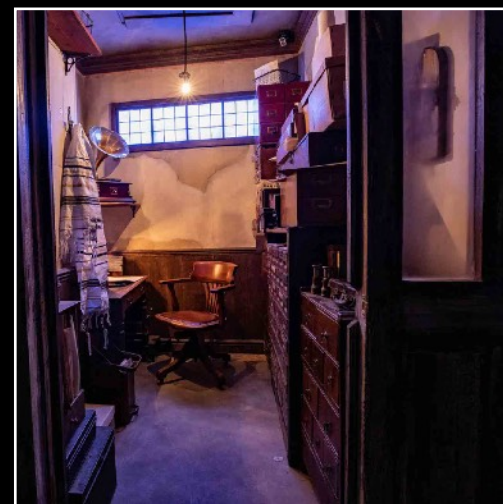
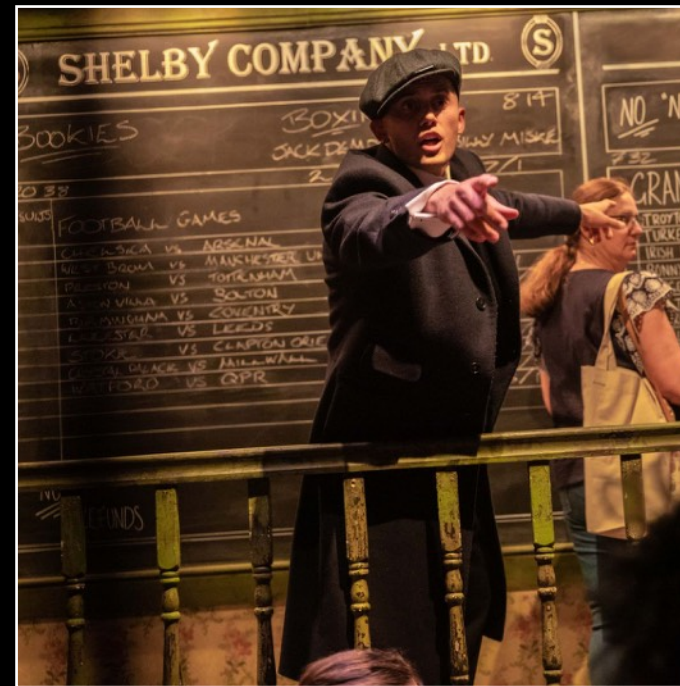


# Peaky Blinders The Rise

Camden Garrison

London, UK | 2022-23

Lighting Design by Terry Cook | Associate LD & Programming by Matt Ladkin for Woodroffe Bassett Design



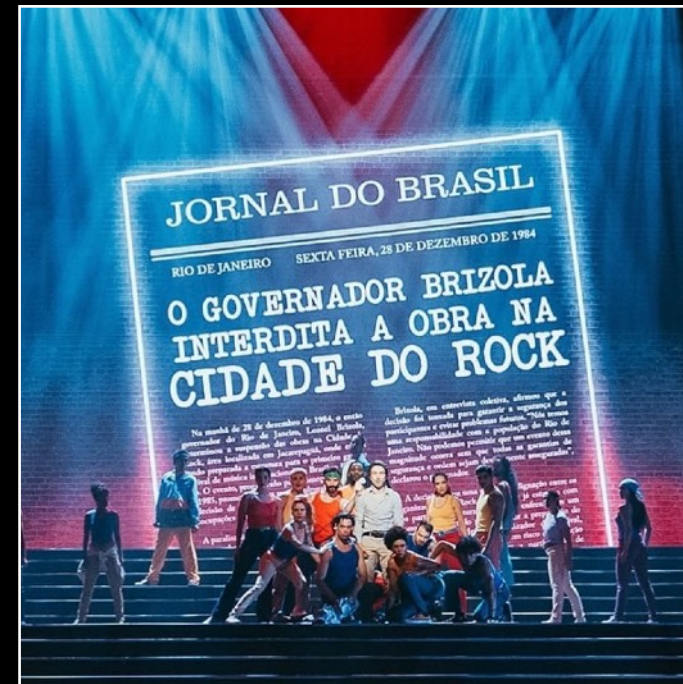


# Sonhos, Lama e Rock & Roll

Arena 1 | Rock in Rio Music Festival

Rio De Janeiro, Brazil | 2024

Lighting Design by Terry Cook & Matt Ladkin for Woodroffe Bassett Design



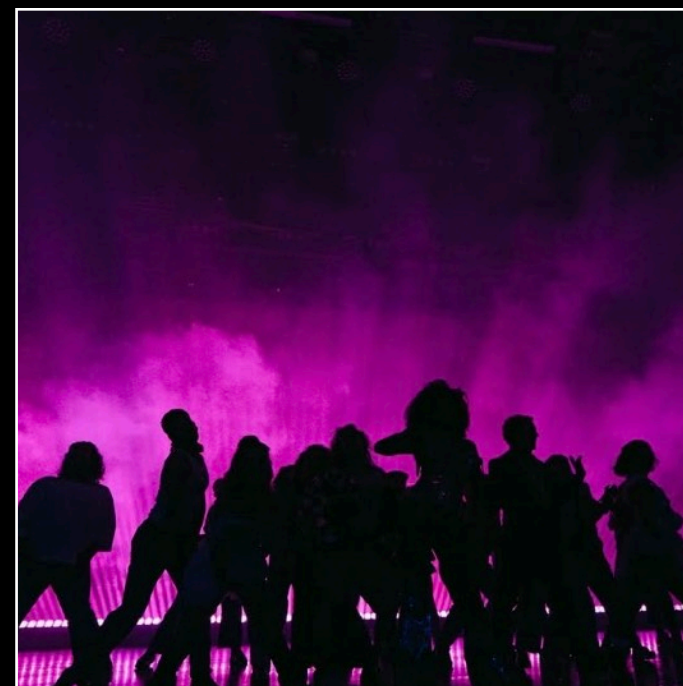
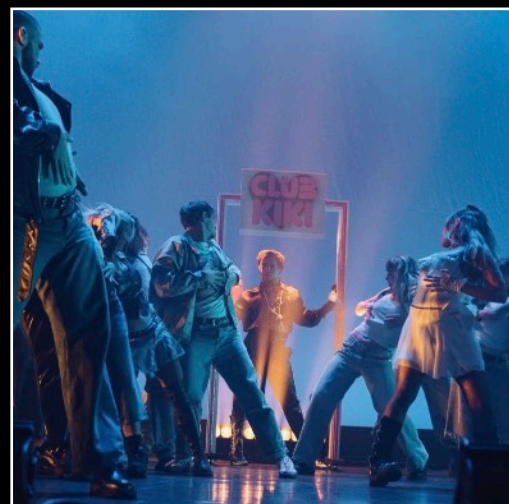


# DANCE // OFFLINE

Indigo at the O2

London, UK | 2025

Lighting Design by Matt Ladkin



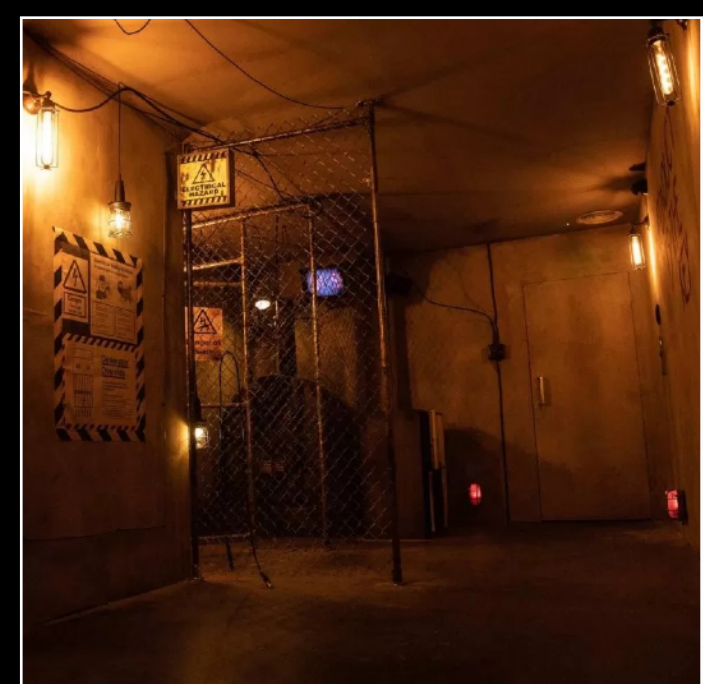


# The Saw Experience

1 America Square

London, UK | 2023

Lighting Design by John Coman | Associate LD & Programming by Matt Ladkin for Woodroffe Bassett Design



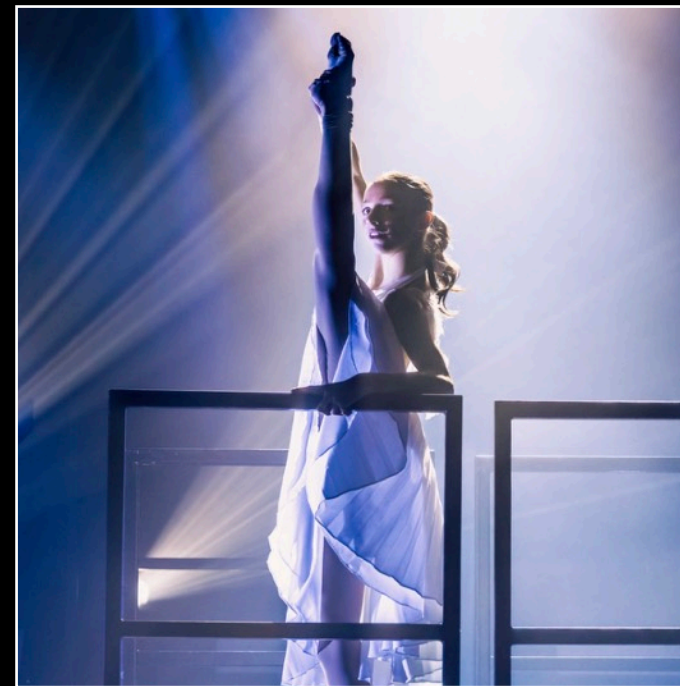


# Italia Conti | The Luhrmann Effect

Rhoda McGaw Theatre

Woking, UK | 2025

Lighting Design by Matt Ladkin



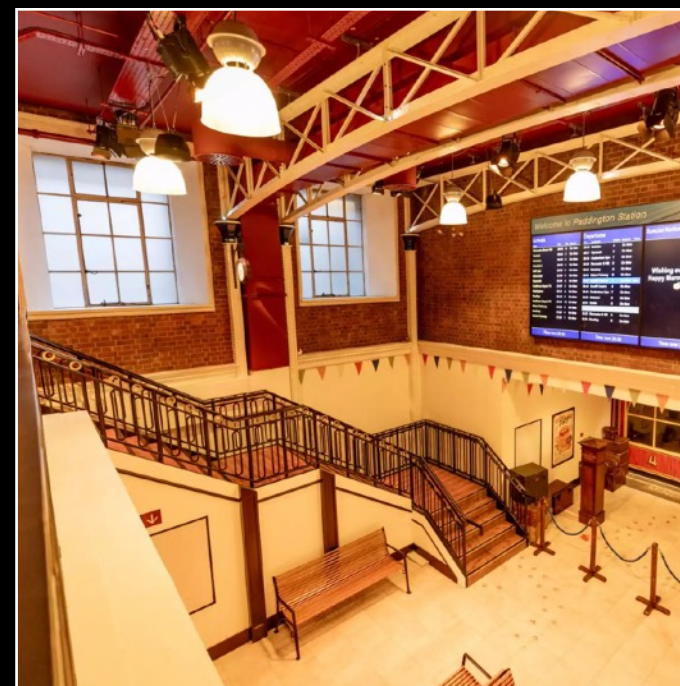


# The Paddington Bear Experience

County Hall

London, UK | 2024-25

Lighting Design by Terry Cook, John Coman & Matt Ladkin for Woodroffe Bassett Design



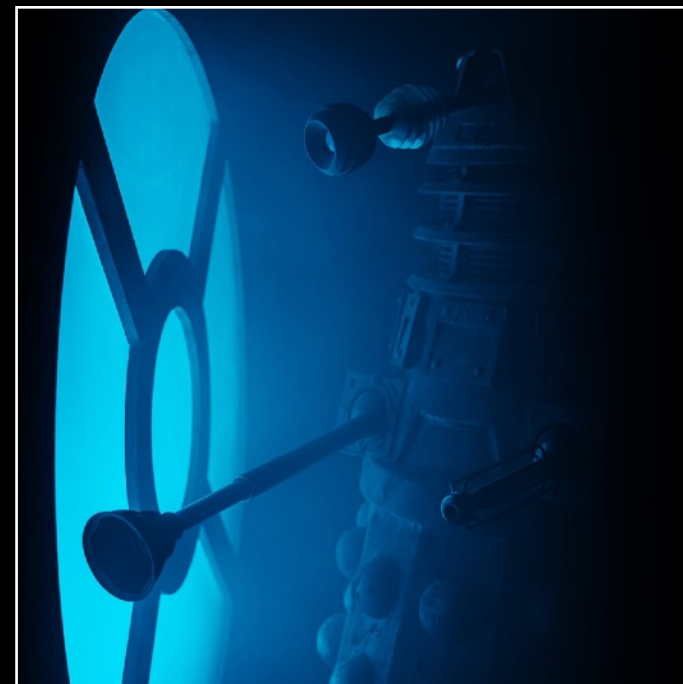


# Doctor Who: Time Fracture

UNIT HQ

London, UK | 2021-22

Lighting Design by Terry Cook | Associate LD & Programming by Matt Ladkin for Woodroffe Bassett Design



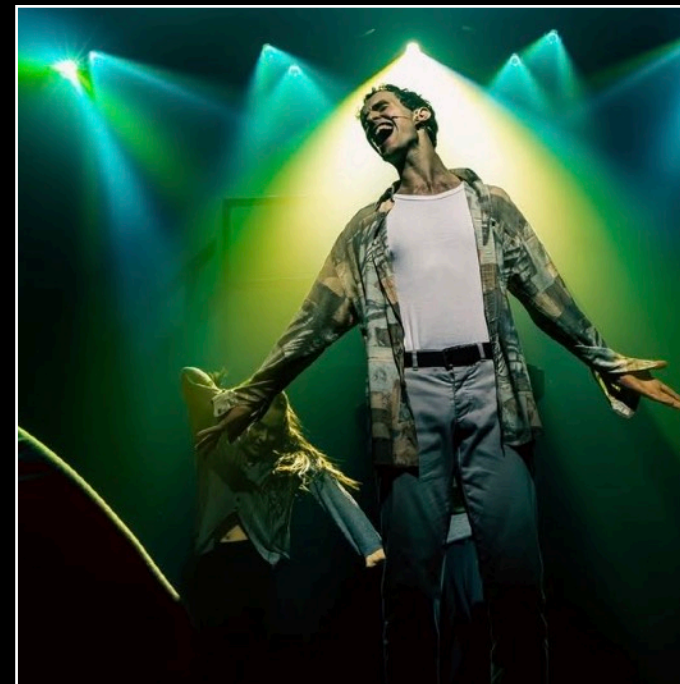


# Italia Conti | In The Room

Rhoda McGaw Theatre

Woking, UK | 2025

Lighting Design by Matt Ladkin





# Grease

Belgrade Theatre  
Coventry, UK | 2024

Lighting Design by Matt Ladkin





# Starlight Express

The Albany Theatre  
Coventry, UK | 2019

Lighting Design by Matt Ladkin



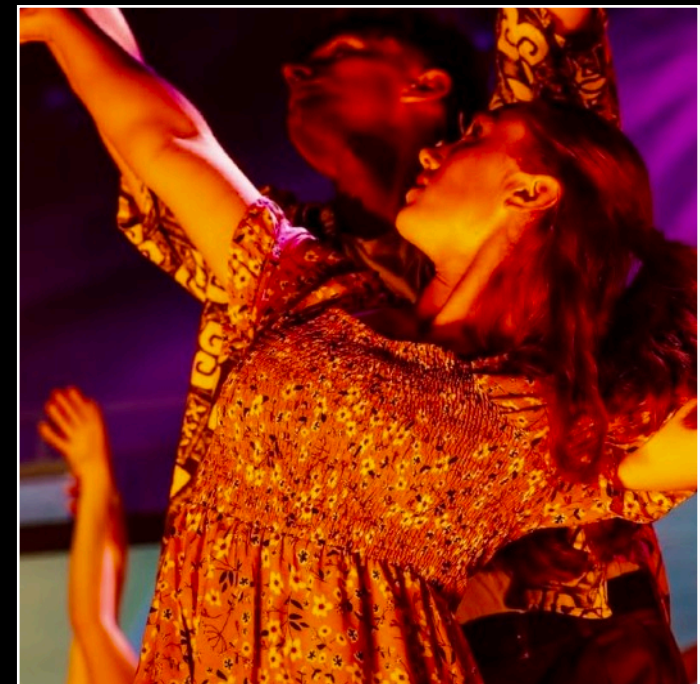


# Italia Conti Summer Showcase

Rhoda McGaw Theatre

Woking, UK | 2022 - 25

Lighting Design by John Coman & Matt Ladkin

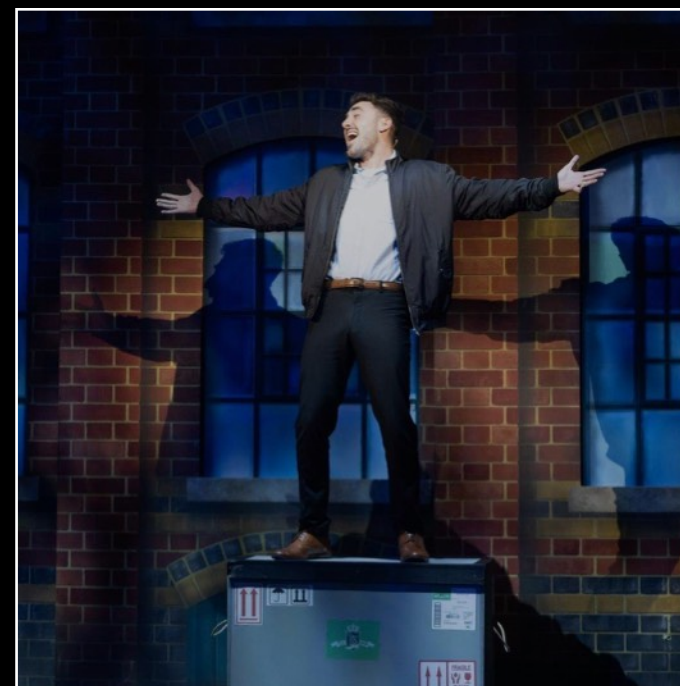




# Kinky Boots

Belgrade Theatre  
Coventry, UK | 2023

Lighting Design by Matt Ladkin



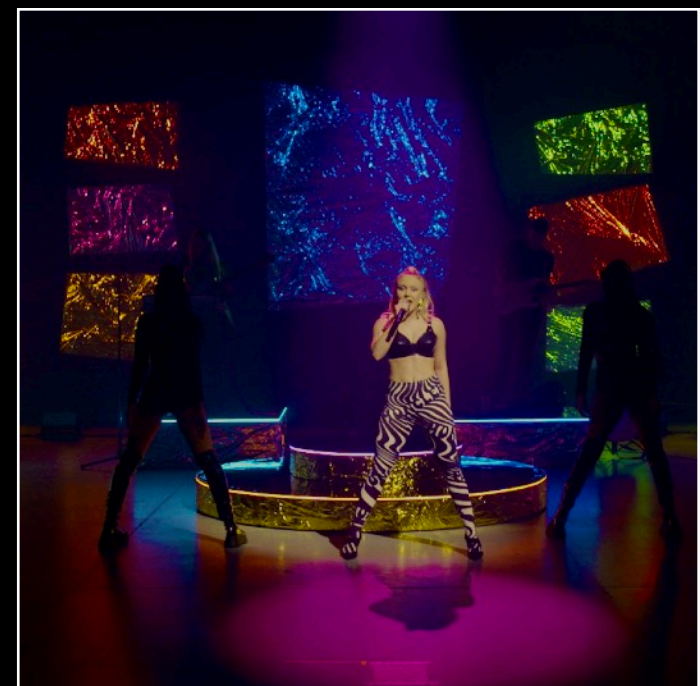


# Zara Larsson | Spotify Live

Backstage Centre

London, UK | 2020

Lighting Design by Matt Ladkin







# Pantomime

(selected credits)

as a Lighting Designer

Beauty & the Beast | Fareham Live | 2025

Sleeping Beauty | Wyvern Theatre, Swindon | 2025

New Adventures of Peter Pan | Mercury Theatre, Colchester | 2024

Cinderella | Fareham Live | 2024

Cinderella | Wyvern Theatre, Swindon | 2024

Peter Pan | Venue Cymru, Llandudno | 2023

Snow White | Wyvern Theatre, Swindon | 2023

Sleeping Beauty | Mercury Theatre, Colchester | 2023

Beauty & the Beast | Wyvern Theatre, Swindon | 2022

Beauty & the Beast | Venue Cymru, Llandudno | 2022

Beauty & the Beast | White Rock Theatre, Hastings | 2022

Sleeping Beauty | The Core At Corby Cube | 2021

Sleeping Beauty | DeMontfort Halls, Leicester | 2021

Beauty & the Beast | Victoria Theatre, Halifax | 2019

Aladdin | DeMontfort Halls, Leicester | 2019

Jack & the Beanstalk | Beacon Arts Centre, Greenock | 2019

Sleeping Beauty | Beacon Arts Centre, Greenock | 2018

Snow White | Beacon Arts Centre, Greenock | 2017

as an Associate Lighting Designer

Peter Pan | DeMontfort Halls, Leicester | 2018

Beauty & the Beast | DeMontfort Halls, Leicester | 2017

as a Lighting Programmer

Peter Pan | DeMontfort Halls, Leicester | 2018-19

Beauty & the Beast | DeMontfort Halls, Leicester | 2017-18



# The New Adventures of Peter Pan

The Mercury Theatre

Colchester, UK | 2024

Lighting Design by Matt Ladkin | Associate LD & Programming by Alex Forey





# Cinderella

The Wyvern Theatre  
Swindon, UK | 2024  
Lighting Design by Matt Ladkin





# Sleeping Beauty

The Mercury Theatre

Colchester, UK | 2023

Lighting Design by Matt Ladkin | Associate LD & Programming by Alex Forey





# Cinderella

Fareham Live  
Fareham, UK | 2024  
Lighting Design by Matt Ladkin





# Corporate Shows & Events

(selected credits)

## as a Lighting Designer

Airmail x Warner Brothers Discovery | Cannes | 2023  
Omega: Every Shade of You | London | 2023  
Harry Potter: A Forbidden Forest Experience | Leesburg, VA | 2022  
NBA x Hennessy | Tate Tanks | 2021  
Salon Live | The ICC Excel | 2019  
Crouch Fest | Indigo @ the O2 | 2019  
Vodafone: Unlimited Launch | UK Tour | 2019  
Butlins Splash Launch Event | Bognor Regis | 2019  
Wimbledon Champions Dinner | The Guildhall London | 2019  
World Chess Championships | St Martins College | 2019  
Mercedes Benz | Fashion Week | 2019  
Accenture: Kaleidoscope | Tate Tanks | 2018-19  
BBC Sounds Launch | Tate Tanks | 2018

## as an Associate Lighting Designer

Cut & Run, 25 Years of Card Labour | Glasgow | 2023  
Bond: Omega | London | 2022  
London New Years Eve Celebration | London | 2021  
The Shard | London | 2021 - 2025  
Vanity Fair Oscars Party | Los Angeles | 2022 - 2025  
Harry Potter: A Forbidden Forest Experience | Arley Hall | 2021  
Christmas at Kew | Kew Gardens | 2020-21  
American Express Platinum Lounge | ALTEC | 2019-21  
Toyota & Lexus Launch Event | ICC Birmingham | 2018  
Wimbledon Partner Forum | ALTEC | 2019  
St James Place ACM | The O2 Arena | 2018-19  
Salon Live | The ICC Excel | 2018  
Wimbledon Champions Dinner | The Guildhall London | 2018

## as a Lighting Programmer

Harry Potter: A Forbidden Forest Experience | Arley Hall | 2021  
Craig Green: Autumn/Winter Mens | Old Billingsgate Vaults | 2019  
TedX Teen | Indigo @ the O2 | 2017  
Salon Live | The ICC Excel | 2017  
American Express Platinum House | London | 2017  
IAAF Congress | The ICC Excel | 2016

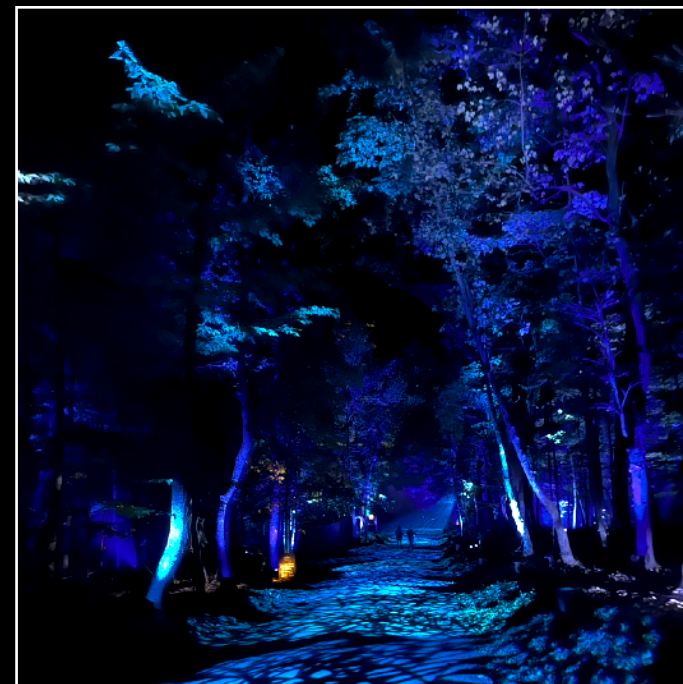
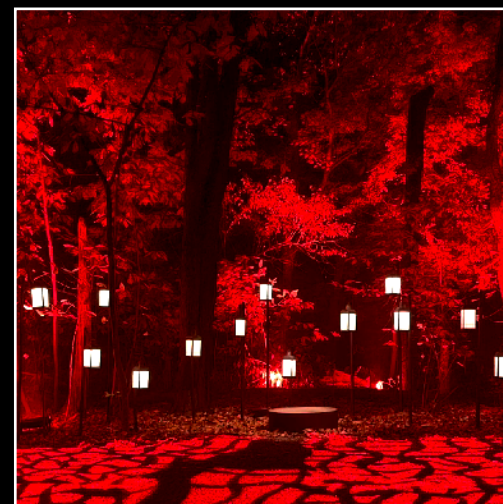
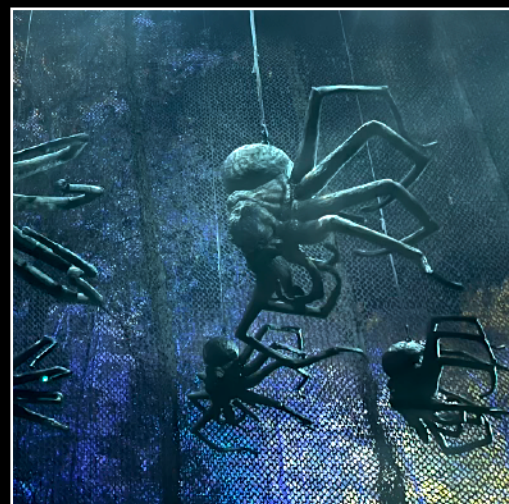
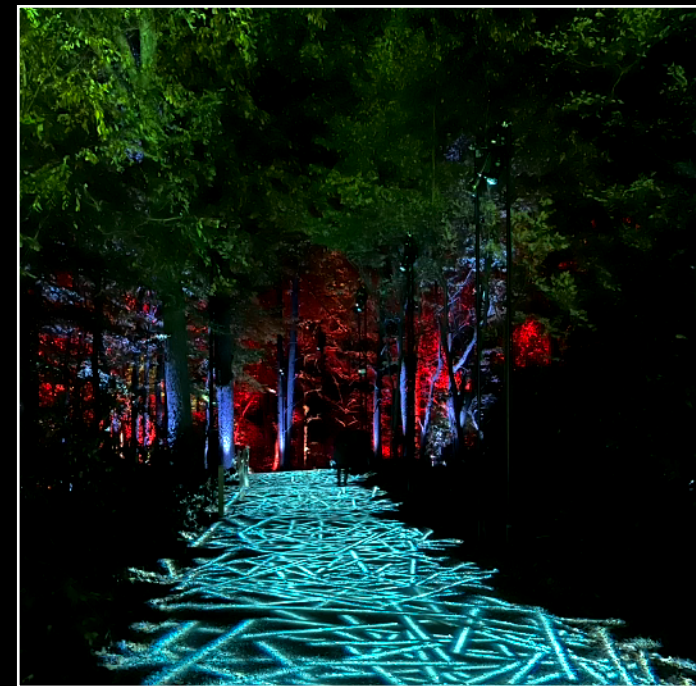
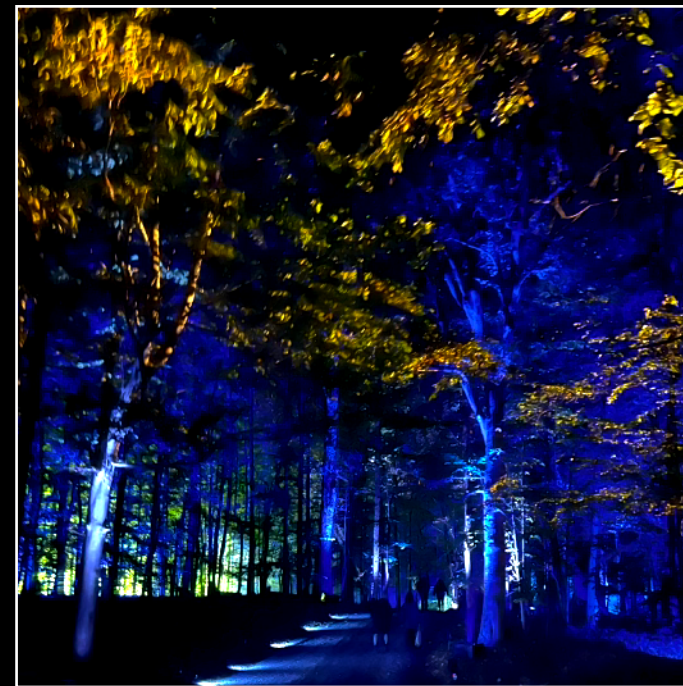
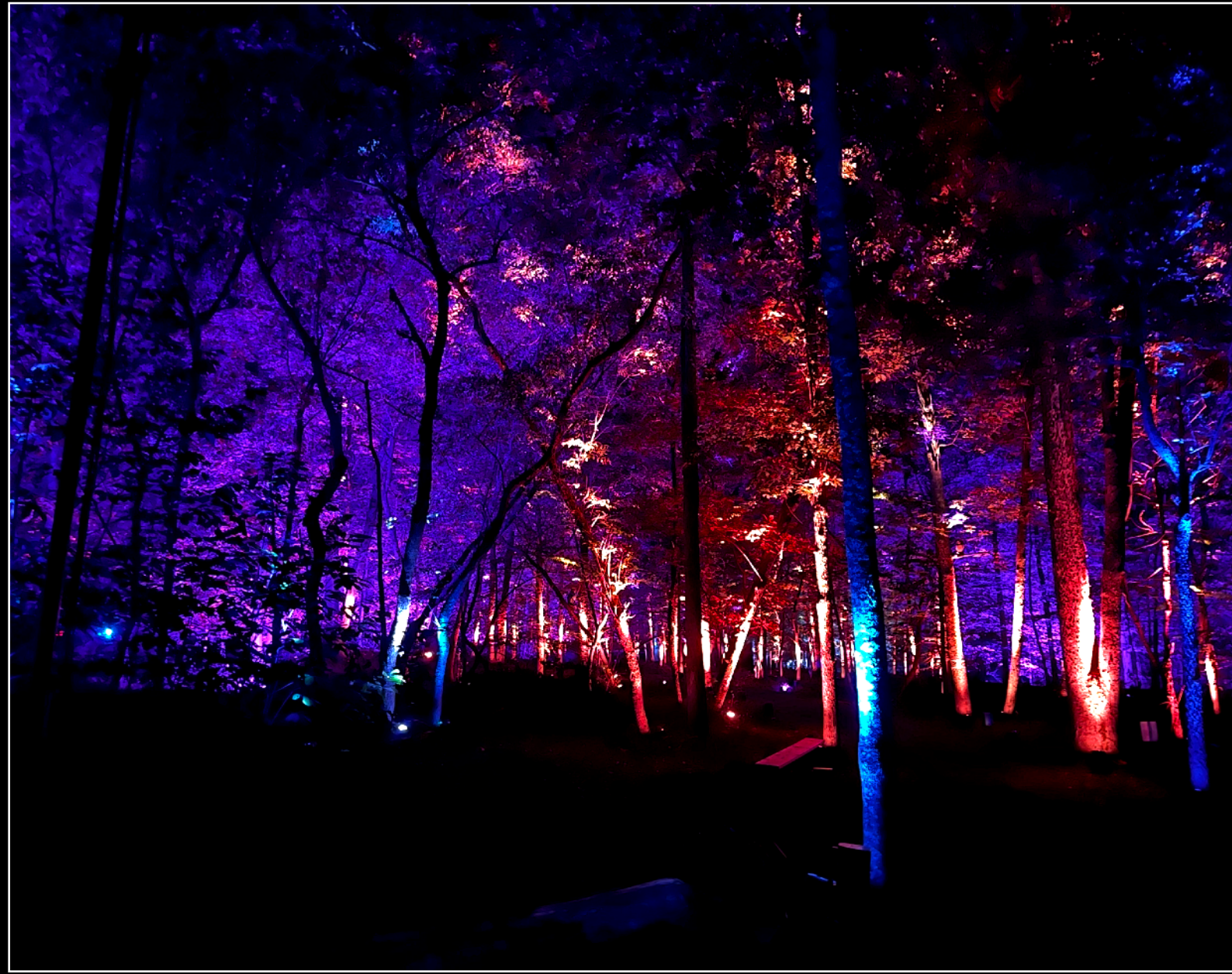


# Harry Potter A Forbidden Forest

Morvern Park

Leesburg VA, USA | 2022

Lighting Design by Matt Ladkin & Adam Povey for APL



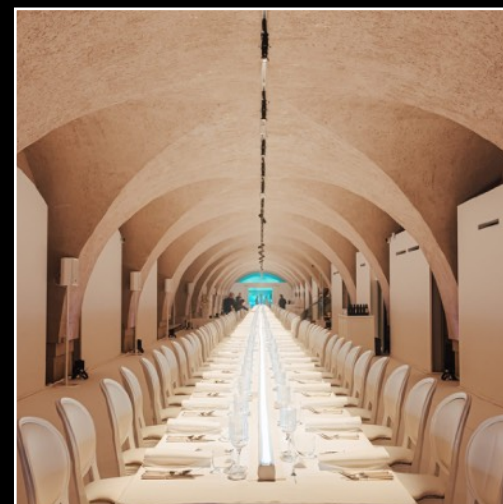


# Omega : Every Shade of You

Somerset House

London, UK | 2023

Lighting Design by Terry Cook & Matt Ladkin for Woodroffe Bassett Design





# Salon Live

The ICC at Excel  
London, UK | 2017-19  
Lighting Design by Matt Ladkin





# Bond : Omega

The Vaults

London, UK | 2022

Lighting Design by Terry Cook , John Coman & Matt Ladkin for Woodroffe Bassett Design





# Vodafone | Unlimited

Bespoke Venue

UK Tour | 2019

Lighting Design by Adam Povey & Matt Ladkin for APL

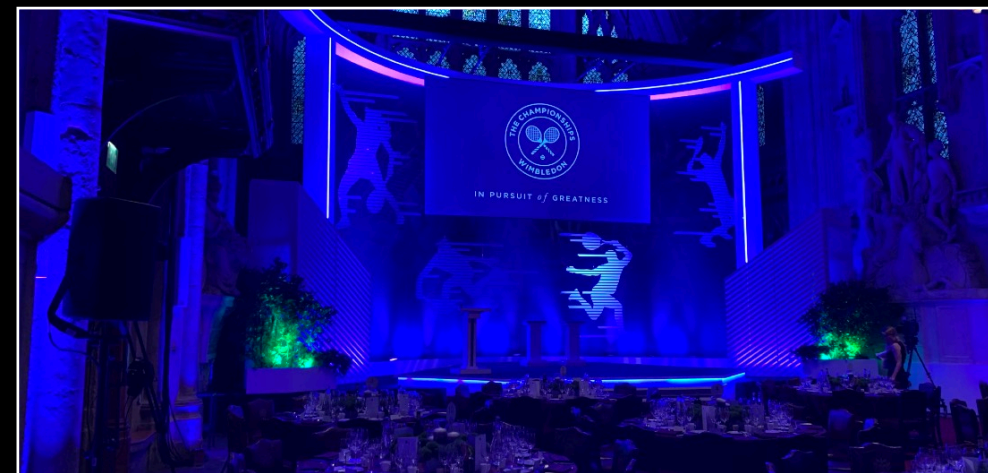


# Wimbledon Champions Dinner

The Guildhall

London | 2019

Lighting Design by Matt Ladkin





# Mercedes Benz

East London Warehouse  
London | 2019  
Lighting Design by Matt Ladkin



# NBA x Hennessy

Tate Tanks  
London | 2022  
Lighting Design by Matt Ladkin







| Designer | Associate | Programmer | Consultant | CAD Draftsman |

[mattladkin.co.uk](http://mattladkin.co.uk)

[hello@mattladkin.co.uk](mailto:hello@mattladkin.co.uk)

+44 (0) 7824 391 549